

## ICONIC SUEDE GREY LOW S1PL ESD FO HRO SR

Art. No 64.003.0



- Protection:** fiberglass toe cap and flexible FAP<sup>®</sup> midsole  
**Plus:** idCELL, ROTATION POINT  
**Upper:** High quality suede leather  
**Lining:** BreathActive functional lining  
**Footbed:** evercushion<sup>®</sup> RELIEF  
**Sole:** 300 °C heat resistant rubber outsole with excellently slip resistant herringbone pattern and idCell  
**Colour:** grey  
**Sizes:** 36 - 48

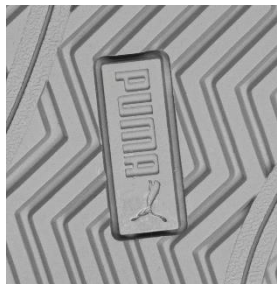
Also available:



ICONIC SUEDE BLACK LOW  
640010

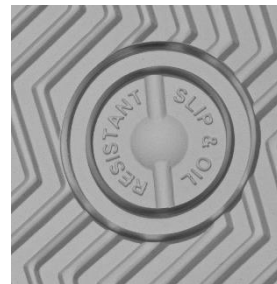


ICONIC SUEDE NAVY LOW  
640020



### RUBBER SOLE HERITAGE

The 300°C heat-resistant rubber outsole has an excellently slip resistant herringbone pattern with optimum grip. The softer rubber midsole grants underfoot cushioning and shock absorption. By increasing the rotation point, friction and thus fatigue are greatly reduced. The wide frame ensures all around perfect stabilization.



### ROTATION POINT

The special feature of the sole is the integrated rotation point. This point in the area of the inner metatarsus is the most severely strained part while walking. By reinforcing the rotation point, friction and thus fatigue is greatly reduced.

### EVERCUSHION<sup>®</sup> RELIEF

The contoured evercushion<sup>®</sup> RELIEF footbed follows the shape of the foot and ensures pressure relief. A specially coordinated arch support enables the foot to be positioned naturally in the shoe and stimulates the muscles while walking. A layer of particularly soft and stable foam guarantees extra cushioning and thus superior shock absorption. Grooves on the underside of the insole ensure that the sole does not slip in the shoe.



### idCELL

The idCELL in the heel and forefoot area consists of a very soft shock-absorbing EVA material. It perfectly absorbs impacts and shocks when the heel strikes the ground.

